

PTFE Composite Expansion Joints



Fluoropolymer Coated and Laminated Composites are widely used for manufacturing of Non-Metallic Expansion Joints, Insulation Jacketing and Floating Roof Seals for oil storage tanks. Our PTFE fiberglass composites and laminates are engineered to survive corrosive environments and severe temperatures.

EuroLam™ expansion joint composites is a high quality woven fiberglass fabrics coated with a special formulated fluoropolymer coating designed to provide enhanced flex properties and excellent high temperature performance, and then laminated with PTFE multilayer cast films to make it pin hole free to provide superior gas barrier properties.

Features:

- Excellent Sealing (No Gas Leak)
- Excellent Chemical Resistance
- Excellent Flexural Strength
- Excellent Tensile Strength And Durability
- High Temperature Resistance Up To 310°C
- Weather Proof

Industries:

- Cement Plants
- Marine Facilities
- Oil Refineries
- Paper Plants
- Power Plants
- Steel Manufacturing Plants
- Waste Incinerating Facilities

Item	Unit	TL 1001	TL 1011	TL 2001	TL2011	KE 861	KE 862	KE 1201	KE 1202
PTFE Cast Film	-	One side	Both sides	One side	Both sides	One side	Both sides	One side	Both sides
Thickness	mm	1.00	1.10	1.20	1.30	0.86	0.90	1.20	1.25
Weight	g/m2	1300	1450	1850	1950	1235	NS	1750	1915
Tensile strength	N/5 cm	7000	7000	11000	11000	6300	6300	10000	10000
Tear strength	N	800	800	2100	2100	600	600	1100	1100
Operating Temperature	°C	-73 to +310				-73 to +300			
Standard Width	mm	1600 (custom widths available)				1200 (maximum)			



Both Sides Laminated With PTFE Cast Film



One Side Laminated With PTFE Cast Film



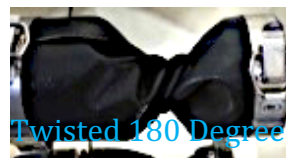
PTFE Cast Film Colours Available

Delamination Test Method of EuroLam™ - Twisted 180 degree for 200 times

This delamination test is to check for rupture or delamination of the PTFE Cast Film from the PTFE coated surface to assure there is no gas leakage or permeation through the expansion joint during critical operations



Start



Twisted 180 Degree



End

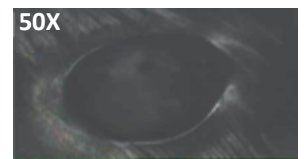
Pin Hole Detection Using High Pot Machine



Pin Hole Test



Surface of EuroLam™ (Cast Film Side)



Pin Hole (Competitive Product)

For Technical Service Support and Supplies : Contact Exclusive Asia Distributor and Converter

Everjoy Industrial Supplies Pte. Ltd.

38 Woodlands Industrial Park E1, #04-11 Singapore 757700

Tel.: +65 6748 3093

Fax: +65 6748 7202

Email: salesmgnt@everjoy.com.sg